

# DIGITAL PRINT LEADERSHIP



*Maximum Applications  
& Profitability for Signage &  
Fabric Printing Businesses*

# COLORJET: INDIA'S LARGEST MANUFACTURER OF DIGITAL INKJET PRINTERS

Whatever you can imagine, ColorJet has the gear to transform your imagination into reality. Since inception in 1995, the ColorJet Group has been powered by over 1500 senior man-years of intensive digital print technology experience. As the leader in Inkjet technology, we offer state-of-the-art large-format printing solutions designed with exceptional speed, flexibility and quality.

The reliability and performance of ColorJet Group, the largest manufacturer of digital inkjet printers, can be seen and experienced in 40 countries worldwide. ColorJet provides versatile, high-quality, and heavy-duty digital signage printers to print on an astonishing range of substrates and take signage printing businesses to the next level.

The company maintains its operations via two manufacturing facilities and sales offices spread across seven countries, including India, Sri Lanka, Saudi, UAE and China. To date, ColorJet has been installed and implemented over 4,000 of its printing solutions and products across 450 cities worldwide, backed by a strong 278 members team, of which almost 100 are in technical related functions. No wonder that apart from leading professionals, the Government of India has also recognized the technological innovation strength of ColorJet's R&D department.

With dependable, high quality and robust output, ColorJet users deliver time and again. Our capabilities ensure maximum business and growth for all associated with us.



**INDIA'S LARGEST  
MANUFACTURER OF WIDE FORMAT  
DIGITAL PRINTERS AWARD**

AT 7<sup>TH</sup> ANNUAL IMAGING  
SOLUTION AWARDS



**RISING STAR OF ASIA AWARD**

AT THE INDO-ASEAN GLOBAL INVESTMENT  
SUMMIT, BANGKOK, THAILAND



**MOST  
TRUSTED  
BRAND  
OF INDIA  
AWARD**

AT INDIAN BRAND  
CONVENTION  
BAM AWARDS 2017



- 1** Complete Range of Signage Printers
- 2** Consumer Focused 3E Product Design Philosophy : Economy, Efficiency & Eco Friendly
- 3** R&D Department Recognised by the Dept. of Science & Technology, Govt. of India
- 4** Strong Service & Training Infrastructure



UV

# VULCAN

HIGH-SPEED 3.2 M ROLL-TO-ROLL  
UV LED INKJET PRINTER

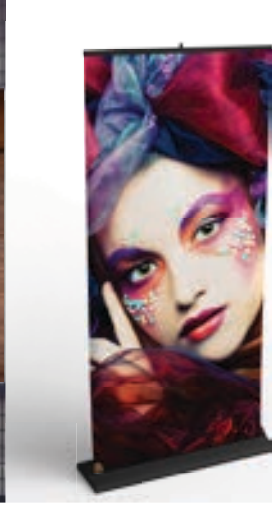


## A PERFECT SOLUTION FOR INDOOR AND OUTDOOR APPLICATIONS



ColorJet's **VULCAN** is a high speed 3.2 m roll-to-roll UV LED Inkjet printer. This back to back printing machine is used for printing banners, signage, billboards, terminal graphics, bus shelters, tradeshow graphics, window displays, flags, wall graphics, building wraps, POP and POS graphics, etc. It is equipped with the capability to print 3-layer, 4-layer, and 5-layer printing. LED lamps and UV inks list this industrial UV printing machine as a green and nature-friendly product.

Our UV roll to roll printer **VULCAN** let you experience unprecedented print speed, high-quality, and lucrative total cost of ownership. Built on a robust industrial production platform and never seen before automation, this industrial UV printing machine can print high volumes and withstands heavy-duty cycles without compromising on quality.



# SPECIFICATIONS

VULCAN 3201										
Model			V3201Y		V3201R			V3201R6		
Printing Technology			Drop-on-demand, Piezo Electric Inkjet on linear motion							
Print Heads			Industrial Grade Jetting Assemblies							
No. of Print Heads			2 to 7 (3.5 PL)		2 to 9 (7 PL)			2 to 9 (5 PL)		
Media	Width		3300 mm							
	Thickness		Maximum 10 mm with Liner							
	Roll Outer Diameter		Maximum 300 mm							
	Roll Weight		Maximum 150 Kgs							
	Core Diameter		2" & 3"							
	Types		Ceiling Film, Vinyl, Advertising Banner, PET, Wall paper, Fabric and many more							
Printing Width			Maximum 3200 mm							
Inks	Types		UV Curable Ink							
	Colors		6 Colors (CMYK LC LM) + W (LC LM optional)		6 Colors (CMYK LC LM) + White (LC LM optional) + V					
Printing Resolution (Dots Per Inch)			Maximum 2400 dpi							
Distance Accuracy			Error of less than ±0.3 % of distance travelled							
Connectivity			High Speed USB 3.0							
Power Requirements			AC 220 V ±10%, 30 A, 50/60 Hz							
Dimensions (Printer only)			5320 x 1260 x 1650mm (LxWxH)							
Dimensions (With Packing)			5830 x 1600 x 2090mm (LxWxH)							
RIP Software			Onyx (ColorJet Edition)							
Weight			2550 Kgs N.W., 2850 Kgs G.W.							
Environmental	Power ON		Temperature: 18 to 28°C. Humidity: 35 to 80% RH (Non-condensing)							
	Power OFF		Temperature: 5 to 40°C. Humidity: 20 to 80% RH (Non-condensing)							
<b>Print Speed (Sqm/hr)</b>										
			Kyocera		Gen 5			Gen 6		
			1 Row	1 Row	1 Row	2 Row	3 Row	1 Row	2 Row	3 Row
Modes	Print DPI	Passes	2 Heads	4 Heads	2 Heads	4 Heads	6 Heads	2 Heads	4 Heads	6 Heads
Mode 1	635 x 600	4	-	-	-	-	-	29	53	73
Mode 2	635 x 900	6	-	-	19	34	51	24	43	56
Mode 3	635 x 1200	8	-	-	16	28	43	18	33	44
Mode 4	960 x 900	6	35	-	-	-	-	-	-	-
Mode 5	960 x 1200	8	27	-	-	-	-	-	-	-
Mode 6	960 x 1800	12	17	-	-	-	-	-	-	-
Mode 8	960 x 1200	4	-	65	-	-	-	-	-	-
Mode 9	960 x 1800	6	-	43	-	-	-	-	-	-
Mode 10	960 x 2400	8	-	32	-	-	-	-	-	-



For Vulcan  
Scan Here

UV

# VULCAN<sup>PRIME</sup>

1.6M UV ROLL-TO-ROLL PRINTER

## MULTIPLE DECO-SIGN APPLICATIONS ENHANCED BUSINESS OPPORTUNITIES



**Vulcan Prime**, the 1.6m UV Roll-to-Roll printer, serves the dual purpose for **signage and interior décor industry**. For signage, the machine offers back-to-back superior quality prints with its multi-layered technology, whereas its embossed 3D effects prints will be a game-changer in the world of interior decor.

Along with ultra-high-quality printing up to 2400 DPI, **Vulcan Prime** is embedded with the UV LED curing process, making printing faster and ecological and ensuring access to numerous printing applications to help your business grow.



## SPECIFICATIONS

<b>Vulcan Prime</b>				
<b>Model</b>		<b>V1607R</b>		
		Variant 1	Variant 2	Variant 3
Printing Technology		Drop-on-demand, Piezo electric inkjet		
Print Heads		Industrial Grade Jetting Assemblies		
No. of Print Heads		2 (7 PL)	3 (7 PL)	3 (7 PL)
Media	Width	1650 mm		
	Thickness	Maximum 5 mm with liner		
	Roll Outer Diameter	Maximum 300 mm		
	Roll Weight	Maximum 75 kgs		
	Core Diameter	76.2mm (3 in)		
	Types	Ceiling Film, Vinyl, Advertising Banner, PET, wall paper, Fabric, and many more		
Printing Width		Maximum 1600 mm		
Ink	Types	UV Curable Ink		
	Colors	CMYK	CMYK + W ( In line )	CMYK +W(Staggered)
Printing Resolution (dots per inch)		Maximum 2400 dpi		
Distance Accuracy		Error of less than $\pm 0.1$ % of distance travelled, or $\pm 0.1$ mm, whichever is greater		
Connectivity		High speed USB		
Power Requirements		AC 220 V $\pm 10\%$ , 7 A, 50/60 Hz		
Dimensions (Printer only)		3330mm x 937mm x 1506mm (LxWxH)		
RIP software		Onyx (Colorjet Edition)		
Weight		642 Kgs		
Environmental	Power ON	Temperature: 18 to 28°C Humidity: 35 to 45%RH (non-condensing)		
	Power OFF	Temperature: 5 to 40°C Humidity: 20 to 60%RH (non-condensing)		
Modes	DPI	Passes	Output Sqm/hr	Output Sqft/hr
Mode 1	360 x 900	3 Pass	14	150
Mode 2	720 x 600	4 Pass	11	120
Mode 3	720 x 900	6 Pass	8.4	90
Mode 4	720 x 1200	8 Pass	6.5	69
Mode 5	720 x 1800	12 Pass(Backlit)	4.2	45
Mode 6	720 x 2400	16 Pass(Backlit)	3.2	34

\*The speeds mentioned above are for Color-White Staggered head configuration.



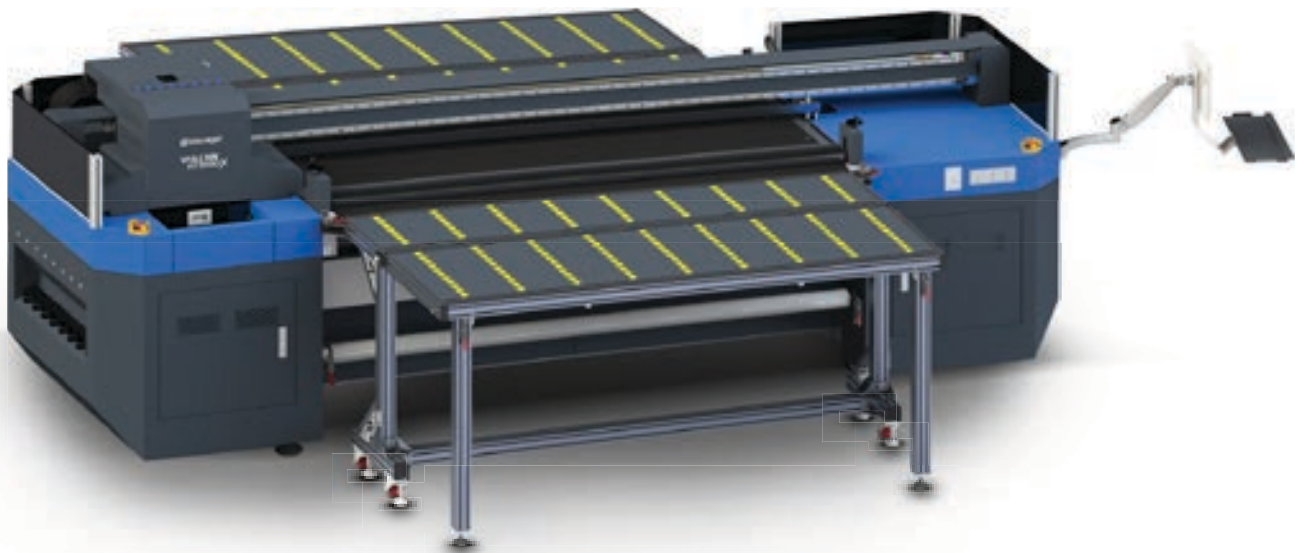
For Vulcan Prime  
Scan Here

UV

# VULCAN HYBRID X

## ONE MACHINE TWO PRINTING FUNCTIONS

2-IN-1 VERSATILE 2 M FLATBED &  
ROLL-TO-ROLL UV PRINTER, SPEED: 78 SQM/HR



Explicitly designed to satisfy the multipurpose needs of processing enterprises, **Vulcan Hybrid X** is a 2 mtr High-Speed printer that delivers highly precise results in no time. The machine can be used as both flatbed and roll to roll printers and boosts business growth with a higher return on investment (ROI).

**Vulcan Hybrid X** can work on the substrates like ACP, foam, board, flute board, glass, ceramic tiles, wood, and a wide range of vinyl and flexible media.





**SPECIFICATIONS**

<b>VULCAN HYBRID 2001</b>									
<b>Model</b>		<b>V2001Y</b>	<b>V2001R</b>	<b>V2001R6</b>					
Printing Technology		Drop-on-demand, Piezo electric inkjet							
Print Heads		Kyocera, Ricoh G5 & G6							
No. of Print Heads		2 to 6 (3.5 PL)	2 to 9 (7 PL)			2 to 9 (5 PL)			
Media	Thickness	1-30mm							
	Size	2000mm							
	Handling	Conveyor							
Printing size		2000mm							
Curing System		UV LED ( water cooling)							
Ink	Types	UV Ink							
	System	Bulk Ink Refillable System							
	Colors	CMYK/LC/LM+Wx	CMYK/LC/LM+W+V			CMYK/LC/LM+W+V			
Distance Accuracy		Error of less than $\pm 0.3$ % of distance travelled, or $\pm 0.3$ mm, whichever is greater							
Connectivity / Interface		USB 2.0							
Power Requirments		AC 220 V, 30A, 50/60 Hz							
Dimensions		4450 x 1400 x 1400 mm							
RIP Software		Onyx (ColorJet Edition)							
Weight		1800 Kg							
Print Head control		Temperature and Voltage control by Waveform Operation							
Environmental		Temperature 20 to 28°C, Humidity 40 to 60%							
<b>Print Speed (In Sq. Meter / Hrs)</b>									
<b>Modes</b>	<b>Print DPI</b>	<b>Passes</b>	<b>Kycoera</b>	<b>Ricoh 5</b>			<b>Ricoh 6</b>		
			1 Row	1 Row	2 Row	3 Row	1 Row	2 Row	3 Row
Mode 1	726 x 1200	4	43	-	-	-	-	-	-
Mode 2	726 x 1800	6	28	-	-	-	-	-	-
Mode 3	726 x 2400	8	21	-	-	-	-	-	-
Mode 1	635 x 600	4	-	-	-	-	29	59	78
Mode 2	635 x 900	6	-	15	27	41	20	40	54
Mode 3	635 x 1200	8	-	12	22	32	15	30	30

\*Also available in 5.2 m & 3.2 m print width



For Vulcan Hybrid 3202  
Scan Here



For Vulcan Hybrid 5003  
Scan Here

UV

# VERVE LED

TRUE FLATBED LED UV PRINTER

VERVE LED (2513/3220HB/3225HB SERIES)

## ENHANCED PRINT BUSINESS OPPORTUNITIES



- **UV LED Curing Flatbed** enables high quality direct printing on almost any kind of materials, including wood, glasses, leather, ceramic tiles & much much more
- High-quality, productive colour scheme with groundbreaking features:

- Dual Negative Pressure System
- Hydraulics Stoppers
- 4-Zone Vacuum System
- White Ink Circulation System
- Mechanical Material Alignment System
- Metal Raster for Precision Printing\*
- Dual Servo Motor Driven Gantry with Metal Raster\*
- Dual Media Height Detection System\*

\*Applicable on Verve 2513 series only

### ADDITIONAL FEATURES

ANTI-CRASH SENSOR to prevent media from damaging the heads while printing.

STATIC SUPPRESSOR for neutralizing static charge on the substrate being printed.



# SPECIFICATIONS

VERVE LED 2513										
Models			K2513M		K2513R			K2513R6		
Printing Technology			Drop-on-demand, Piezo Electric Inkjet							
Print Heads			Industrial Grade Jetting Assemblies							
No. of Print Heads			4 to 8 (6 PL)		2 to 9 (7 PL)			3 to 9 (5 PL)		
Media	Size		2.56 m x 1.68 m							
	Thickness		Maximum 100 mm							
	Handling		Suction & Blower							
Printing size			2.44 m x 1.22 m							
Curing System			Dual UV LED Lamps							
Ink	Type		UV LED Curable Ink							
	System		Bulk Ink Refillable System							
	Colors		CMYK + W + V							
Printing Resolution (dots per inch)			1200 dpi							
Distance Accuracy			Error of less than $\pm 0.3$ % of distance travelled, or $\pm 0.3$ mm, whichever is greater							
Connectivity/Interface			USB 2.0							
Power Requirements			AC 220 V, 30 A, 50/60 Hz							
Dimensions (Printer only)			4660 x 2180 x 1480 mm							
Dimensions (With Packing)			4830 x 2280 x 1840 mm							
RIP software			Onyx (Colorjet Edition)							
Weight (Net Weight/Gross Weight) kgs			1450 / 1650							
Environmental	Power ON		Temperature: 18 to 28°C Humidity: 20 to 60% RH (Non-condensing)							
	Power OFF		Temperature: 5 to 40°C Humidity: 20 to 80% RH (Non-condensing)							
<b>Print Speed (Sqm/hr)</b>										
			KM 1024 a		Gen 5			Gen 6		
<b>Modes</b>	<b>Print DPI</b>	<b>Passes</b>	<b>4 Heads</b>	<b>8 Heads</b>	<b>2 Heads</b>	<b>4 Heads</b>	<b>6 Heads</b>	<b>2 Heads</b>	<b>4 Heads</b>	<b>6 Heads</b>
			1 Row	2 Rows	1 Rows	2 Rows	3 Row	1 Row	2 Row	3 Row
Mode 1	635 x 900	6	-	-	15	27	41	-	-	-
Mode 2	635 x 1200	8	-	-	12	22	32	-	-	-
Mode 1	635 x 600	4	-	-	-	-	-	32	53	68
Mode 2	635 x 900	6	-	-	-	-	-	22	39	52
Mode 1	540 x 1440	4	34	61	-	-	-	-	-	-
Mode 2	540 x 1080	6	23	41	-	-	-	-	-	-
Mode 3	540 x 1440	8	17	30	-	-	-	-	-	-

\*Gradient weak speeds are only for CMYK.



For Verve Led 3220 HB  
Scan Here



For Verve Led 3225 HB  
Scan Here

UV

# VERVE XL 3220

TRUE FLATBED UV PRINTER



**MORE SPEED!  
MORE OUTPUT!  
ENHANCED PROFITABILITY!**



**Verve XL 3220** is tech-enabled with an independent four-zone vacuum adsorption platform to adjust to soft and rigid media easily. Optimized to print on size 3.2x2 m and an adjustable head height of 200 mm (optional feature). **Verve XL 3220** is an ideal printer for high speed & high-quality printing.

## SPECIFICATION:

- Comes with Anti-Crash system
- Automatic Head Height Detector
- Print heavy substrates upto 100kg
- Equipped with Japanese noise-free guide rail
- Can print heavy substrates upto 100kgs

## ADDITIONAL FEATURES

- High Precision
- Position Pin and table with the scale rule
- Multiple Color Layout
- High energy LED
- Linear motor drive
- Y axis is dual motor + Ball Screw movement control
- Two vacuum pump
- Horizontal Bed



# SPECIFICATIONS

VERVE XL 3220										
Models		KXL 3220 Y			KXL 3220 R			KXL 3220 R6		
Printing Technology		Drop-on-demand, Piezo Electric Inkjet								
No. of Print Heads		2-6 (3.5 PL)			2-9 (7 PL)			2-9 (5PL)		
Head Type		Kyocera, Ricoh G5 & G6								
Ink		VERJET – based on the printheads and support policy								
Media	Thickness	1-100mm								
	Handling	Suction & Blower								
Printing size		3200x2000mm								
Curing System		UV LED ( water cooling)								
Ink	Type	UV Ink								
	System	Bulk Ink Refillable System								
	Colors	CMYK/LC/LM+Wx			CMYK/LC/LM+W+V			CMYK/LC/LM+W+V		
Distance Accuracy		Error of less than $\pm 0.3\%$ of distance travelled, or $\pm 0.3$ mm, whichever is greater								
Connectivity/Interface		USB 2.0								
Power Requirements		AC 220 V, 30A, 50/60 Hz								
Dimensions		5060x2780x1350mm								
RIP software		ONYX(ColorJet Edition )								
Weight		2350Kg								
Print Head control		Temperature and Voltage control by Waveform Operation								
Environmental		Temp. 20°C-28°C; Humidity 40%-60%								
Print Speed (Sq. Meter/Hrs)										
Modes	Print DPI	Passes	K3220Y (KYOCERA)			K3220R5 (RICOH 5)			K3220R6 (RICOH 6)	
			1 ROW	1 ROW	2 ROW	3 ROW	1 ROW	2 ROW	3 ROW	
Mode 1	726x1200	4	39	-	-	-	-	-	-	
Mode 2	726x1800	6	27	-	-	-	-	-	-	
Mode 3	726x2400	8	19	-	-	-	-	-	-	
Mode 1	635x600	4	-	-	-	-	32	53	73	
Mode 2	635x900	6	-	17	31	43	21	39	51	
Mode 3	635x1200	8	-	13	22	30	16	29	38	

\* All speeds mentioned are for CMYK



For VerveXL 3220  
Scan Here

UV

# VERVE HYBRID

UV FLATBED/ROLL-TO-ROLL PRINTER

VERVE HYBRID (3220/3225 SERIES)

## DELIVERS SUPER SPEED VERSATILE UV PERFORMANCE



**VERVE HYBRID** is a 3.2 M UV Flatbed Roll to Roll Hybrid printer that delivers fast and versatile UV performance. This UV printer enables super speed production and is engineered for high-endurance work and low running costs to deliver high-quality print for a long time.

### FEATURES FOR HIGHER PRODUCTIVITY

- > Extra wide print width – 3.2m
- > Proprietary AIVC jetting technology
- > Variable drop technology
- > Accurate and reliable high speed printing
- > Large range of printable media
- > Solid build quality, low maintenance

### ADDITIONAL FEATURES

- > Precisely engineered using 3D CNC Machinery
- > Intelligent Media Thickness System
- > Anti-Crash Sensor
- > Advanced RIP for faster processing & better colour management
- > Fully customised printer settings for enhanced print results
- > Industrial grade jetting assembly
- > Consistent print quality through the life of printhead
- > System designed to use white ink as additional color
- > Adjustable UV lamp power enables better drying control
- > Vacuum system can be adjusted in four zones
- > Specially formulated inks with wider color gamut & higher density.



# SPECIFICATIONS

VERVE HYBRID 3220													
Models			Y3220Y		Y3220R				Y3220R6				
Printing Technology			Drop-on-demand, Piezo Electric Inkjet										
Print Head Type			Industrial Grade Jetting Assemblies										
No. of Print Heads			2 to 8 (3.5 PL)		2 to 12 (7 PL)				2 to 12 (5PL)				
Media		Size	3.2m x 2.0m Bed / 3.2m x Unlimited Roll										
		Thickness	Maximum 100 mm										
		Handling	Suction & Blower										
Printing Size			3.2m x 2.0m / 3.2m x Unlimited Roll										
Curing System			Dual UV LED Lamps										
Ink		Type	UV LED Curable Ink										
		System	Bulk Ink Refillable System										
		Colors	CMYK + W (Lc Lm)		CMYK + W + V (Lc Lm Optional)								
Printing Resolution (dots per inch)			2400 dpi										
Distance Accuracy			Error of less than ±0.3 % of distance travelled, or ±0.3 mm, whichever is greater										
Connectivity/Interface			USB 3.1										
Power Requirements			AC 220 V, 30 A, 50/60 Hz										
Dimensions (Printer Only)(LxWxH)			5600mm x 3350mm x 1550mm										
Dimensions (With Packing)(LxWxH)			5780mm x 2280mm x 1940mm, 4180mm x 880mm x 1340mm										
RIP Software			Onyx (ColorJet Edition)										
Weight			N.W. 3360 Kg, G.W. 3900 Kg										
Environmental		Power ON	Temperature:18 to 28 °C Humidity: 20 to 60%RH (Non-condensing)										
		Power OFF	Temperature: 5 to 40 °C Humidity: 20 to 80%RH (Non-condensing)										
Flatbed / Roll-to-Roll Print Speed (Sqm/hr)													
3220 Hybrid			Kyocera		Ricoh 5				Ricoh 6				
Modes	Print DPI	Passes	2 Heads	4 Heads	2 Heads	4 Heads	6 Heads	8 Heads	2 Heads	4 Heads	6 Heads	8 Heads	
			1 row	2 row	1 row	2 row	3 row	4 row	1 row	2 row	3 row	4 row	
Mode 1	604 x 600	4	48	75	-	-	-	-	-	-	-	-	
Mode 2	604 x 900	6	33	54	-	-	-	-	-	-	-	-	
Mode 3	604 x 1200	8	25	43	-	-	-	-	-	-	-	-	
Mode 1	635 x 600	4	-	-	25	48	-	-	34	55	71	91	
Mode 2	635 x 900	6	-	-	17	33	51	68	24	41	54	76	
Mode 3	635 x 1200	8	-	-	13	25	43	58	18	33	43	61	

\*Also available in 3225 bed size, Please refer to website



For Verve Hybrid 3225  
Scan Here

UV

# VERVE mini

COMPACT FLATBED LED UV PRINTER

## ONE PRINTER MULTIPLE APPLICATIONS



The new Verve Mini is a True Flatbed UV Printer to redefine printing experience faster and more exhilarating with less investment and offers big opportunities. Verve Mini is UV flatbed printer, now coming up with an automatic head adjuster up to 100 mm. Equipped with 1000 x 1600 mm print size, adopting new 4 to 7 Pcs Ricoh Print Head with Print Speed of 60 sqft/h.





# SPECIFICATIONS

VERVE MINI				
Model		KB6622		KB7622
Printing Technology		Drop-on-demand, Piezo Electric Inkjet		
Print Heads		Industrial Grade Jetting Assemblies		
No. of Print Heads		6 heads		7 heads
No. of Rows		2 rows		3 rows
Media	Size	1050 x 1650 mm		
	Thickness	Maximum 65 mm / 100 mm		
	Handling	Suction & Blower		
Printing Size		1000 x 1600 mm		
Ink	Inks	UV LED Curable Ink		
	Types	Rigid/Universal/Flexible		
	Colors	CMYK W V		
Curing System		Dual UV LED Lamps		
Printing Resolution (dots per inch)		1800 dpi		
Distance Accuracy		Error of less than $\pm 0.3\%$ of distance travelled, or $\pm 0.3$ mm, whichever is greater		
Connectivity / Interface		High Speed USB		
Power Requirements		AC 230V, 20A, 50/60 Hz		
Dimensions (Printer Only) (LxWxH)		2250 x 2200 x 1200 mm		
Dimensions (With Packing) (LxWxH)		2700 x 1400 x 1700 mm		
RIP Software		Flex		
Weight		Net Weight. 375 kg, Gross Weight. 635 kg		
Environmental	Power On	Temperature 20 to 28 C, Humidity 40 to 60 % RH (Non-Condensing)		
	Power Off	Temperature 20 to 28 C, Humidity 40 to 60 % RH (Non-Condensing)		
Modes	Print DPI	Passes	Print Speed Sqft/hr (only CMYK+W)	Print Speed Sqft/hr (only CMYK+W+V)
Mode 1	720 x 900	6	60	60
Mode 2	720 x 1200	8	48	48



For Verve mini  
Scan Here

SOFT SIGNAGE

**SOFTJET GRAND<sup>®</sup>** 8 COLOR  
OPTION AVAILABLE

GRAND FORMAT 3.2 MTR. SOFT SIGNAGE PRINTER

## FOR REDUCED ENVIRONMENTAL IMPACT & GREATER PROFITABILITY



**SOFTJET GRAND**, the 3.2 mtr wide printer is the perfect solution, completely in-sync with the diverse requirements of today's well-developed market. An industrial soft signage printer that combines digital advantages, efficiently optimised to replace PVC-based media completely. It easily prints on polyester-based fabrics which can be recycled and uses environment-friendly aqueous based inks. **Softjet Grand** is most suitable for a large range of soft signage applications, such as banners, displays, wall decorations, signage, parasols, flags, backdrops and outdoor advertisements.

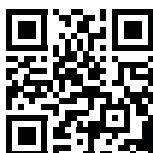
- Ultra High Productivity
- Reduced Environmental Impact
- Vibrant Colors & Reproduction
- Maximum Applications & Profitability





# SPECIFICATIONS

			SOFTJET GRAND	
Models			L8424	L8824
Printing Technology			Drop on demand, Piezo electric inkjet	
Print Heads			Industrial Grade Jetting Assemblies	
No. of Print Heads			8	8
Fabric	Width	3300 mm		
	Thickness	Maximum 10mm with Liner		
	Roll Outer Diameter	Maximum 300mm		
	Roll Weight	Maximum 90kg		
	Core Diameter	76.2mm		
	Types	Polyester, Satin, Canvas & Blends		
Printing Width			Maximum 3200mm	
Inks	Types	Direct disperse inks		
	Colors	4	8	
Printing Resolution (dots per inch)			Maximum Up to 1440 dpi	
Distance Accuracy			Error of less than ±0.3 % of distance travelled, or ±0.3 mm, whichever is greater	
Media Heating System			Pre-heater and post-heater, setting range for the preset temperature: 30°C to 60°C Dryer setting range for the preset temperature: 30°C to 60°C	
Connectivity			High Speed USB	
Power Requirements			AC 220 V, 40A(± 10%), 50Hz	
Dimensions (Printer only) (LxWxH)			5300 x 1450 x 1650mm	
RIP Software			PhotoPrint (ColorJet Edition)	
Weight (approx. with stand)			2000 Kgs	
Environmental	Power ON	Temperature: 18°C to 28°C. Humidity: 35% to 80%RH (non-condensing)		
	Power OFF	Temperature: 5°C to 40°C. Humidity: 20% to 80%RH (non-condensing)		
			Print Speed (Sqm/hr)	
Modes	Print DPI	Passes	L8424	L8824
Mode 1	540 x 720	2	167	98
Mode 2	540 x 1080	3	116	68
Mode 3	540 x 1440	4	87	51
Mode 4	720 x 1080	6	46	26
Mode 5	720 x 1440	8	42	24
Fusing Unit Specification	Power Requirement	Voltage AC 380 V ± 10%, 50-60 Hz, 21A,		
	Heating Range	160°C- 240°C Heat Energy		
	Dimensions	5180mm x 900mm x 1540mm (LxWxH)		
	Max Fabric Width	3300 mm		



For Softjet Grand  
Scan Here

SOLVENT

# POLO<sub>XL</sub>

3.2 MTR ROLL-TO-ROLL  
SOLVENT PRINTER

HIGH-QUALITY,  
MAX PROFITABILITY,  
HIGH-SPEED SOLVENT  
PRINTER



**Polo XL**, 3.2 meter industrial- grade solvent printer is a combination of high speed and high-quality printing. Designed to provide an unprecedented solution for indoor and outdoor printing needs with production capacity up to 4700 sqft/hr. Its independent drive technology renowned for high speed, high-quality output, reliability, and low running costs

## SPECIFICATION:

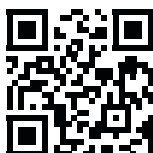
- Optimized weight distribution, enabling perfect CG
- 3 meter wide Take-up system
- Enhanced printing dryer
- Enhanced Aerodynamic Carriage
- Transport and Relocation Friendly





# SPECIFICATIONS

POLO XL						
Models			GB4424	GB8424	GB4412	GB8412
Printing Technology			Drop-on-demand, Piezo electric inkjet			
No. of Print Heads			4 Head	8 Head	4 Head	8 Head
Print Heads			Grayscale Industrial Grade Jetting assemblies			
Media	Width		3300 mm			
	Thickness		Maximum 3.0 mm with Liner			
	Roll Outer Diameter		Maximum 352 mm			
	Roll Weight		Maximum 150 Kg			
	Core Diameter		76.2 mm, 50.8 mm			
	Types		SAV, PAV Banner, Backlit Film, Window Film, Fabric (Solvent Base)			
Printing Width			Maximum 3200 mm			
Ink	Types		Solvent based pigment inks			
	Color		4 colors			
Printing Resolution (dots per inch)			Maximum up to 1440 dpi			
Distance Accuracy			Error of less than $\pm 0.3\%$ of distance travelled, or $\pm 0.3$ mm whichever is greater			
Media Heating System			Pre-heater and post-heater, setting range for the preset temperature: 30°C to 60°C. Dryer Setting range for the preset temperature: 30°C to 60°C			
Connectivity			High Speed USB			
Power Requirements			AC 220V , 40A ( $\pm 10\%$ ), 50Hz			
Dimensions (Printer only)			4960 mm x 950 mm x 1580 mm (LxWxH)			
RIP software			Onyx (ColorJet Edition)			
Weight (approx. with stand)			1500 kgs			
Environmental	Power ON		Temperature: 18°C to 28°C, Humidity: 35 to 80%RH (Non-condensing)			
	Power OFF		Temperature: 5°C to 40°C, Humidity: 20 to 80%RH (Non-condensing)			
<b>Print Speed</b>						
			KM 1024 i		KM 512 i	
			<b>GB4424</b>	<b>GB8424</b>	<b>GB4412</b>	<b>GB8412</b>
Modes	Print DPI	Passes	Speed (In Sqft/hr)	Speed (In Sqft/hr)	Speed (In Sqm/hr)	Speed (In Sqft/hr)
Mode 1	360 x 360	1	2830	4715	-	-
Mode 2	360 x 720	2	1636	2744	-	-
Mode 3	360 x 1080	3	1162	1937	-	-
Mode 4	360 x 1440	4	904	1506	-	-
Mode 5	360 x 1080	6	645	1076	-	-
Mode 6	360 x 1440	8	516	861	-	-
Mode 1	360 x 360	2	-	-	1614	2818
Mode 2	360 x 540	3	-	-	1093	2000
Mode 3	360 x 720	4	-	-	806	1476
Mode 4	720 x 720	4	-	-	521	930
Mode 5	720 x 1080	6	-	-	327	640
Mode 6	720 x 1440	8	-	-	249	490



For Polo XL  
Scan Here

SOLVENT

**SONIQ DUO**  
SOLVENT PRINTER



## ADVANCED ENGINEERING FOR ULTIMATE PRINTING EXCELLENCE



Introducing the **SoniQ Duo**, a groundbreaking 3.2-meter Solvent Printer designed to revolutionize indoor and outdoor signage production. Equipped with 8 high-speed KM heads, it sets a new benchmark for upgradability, guaranteeing peak performance well into the future. Delivering breathtaking quality at an impressive speed of 2217 sqft/hr, it caters perfectly to both indoor and outdoor requirements.

### SONIQ DUO PIONEERING DEVELOPMENTS:



Efficient  
**IR DRYING**  
System



Head  
Upgradability  
with **8 HEADS**



Advanced  
**CAPPING**  
STATION



**3-WAY**  
Heating  
Mechanism



**SUCTION-**  
Boost  
Technology



# SPECIFICATIONS

SONIQ DUO				
Model		SB4412		SB8412
Printing Technology		Drop-on-demand, Piezo electric inkjet		
Print Heads		Industrial Grade Jetting Assemblies		
No. of Heads		4		8
Media	Width	3300 mm (129 in.)		
	Thickness	Maximum 3.0 mm (120 mil) with liner (flexible)		
	Roll Outer Diameter	Maximum 300mm (12inch), 50.8 (2 in)		
	Roll Weight	Maximum 90 kgs		
	Core Diameter	76.2mm (3 inch)		
	Types	SAV, PAV Banner, Backlite Film, Window Film, Fabric (Solvent Base)		
Printing Width		Maximum 3200mm (126 inch.)		
Inks	Types	Solvent/Mild Solvent inks		
	Colors	4 Colors (CMYK)		
Printing Resolution (Dots Per Inch)		Maximum up to 1440 dpi		
Distance Accuracy		Error of less than $\pm 0.3\%$ of distance travelled, or $\pm 0.3$ mm, whichever is greater		
Media Heating System		Pre Heater and Post Heater, setting range for the preset temperature: 30 to 60°C. Dryer setting range for the preset temperature : 30 to 60°C		
Connectivity		High speed USB		
Power Requirements		AC 220 V $\pm 10\%$ , 40 A, 50/60 Hz		
Dimensions		4700mm X 1000mm X 1450mm(WxDxH)		
RIP Software		FlexiPrint		
Weight (approx. with stand)		Net Weight : 550 KG, Gross Weight : 742 KG		
Environmental	Power ON	Temperature: 18 to 28°C Humidity: 35 to 80%RH (non-condensing)		
	Power OFF	Temperature: 5 to 40°C Humidity: 20 to 80%RH (non-condensing)		
Modes	Print DPI	Passes	Sqft/Hr (4 Heads)	Sqft/Hr (8 Heads)
Mode 1	360x360	2	1232	2217
Mode 2	360x540	3	830	1496
Mode 3	360x720	4	664	1205
Mode 4	720x720	4	348	635
Mode 5	720x1080	6	232	420
Mode 6	720x1440	8	177	322



For Soniq DUO  
Scan Here

SOLVENT

# SONIQ i

3.2 MTR ROLL-TO-ROLL PRINTER

## SLEEK, COMPACT & FUTURISTIC PRINTER



**SoniQ i** delivers excellent print quality at an ultra-fast speed of 1232 sqft/hr and offers maximum performance at a minimum investment. The heavy-duty forefront industrial print heads of the machine are engineered for lasting performance. With 3.2 mtr roll capability to accommodate every media size, it is also an excellent alternative for huge savings on inks & time with pressure purge for individual colors.

### PREMIUM FEATURES:



#### FGP (FOREFRONT GANTRY PRECISION) TECHNOLOGY

SoniQ i comes with unmatched FGP technology, which ensures extremely less deviation between jet to bed distance (<0.1mm) over the entire printing span and maintains consistent print quality.



#### EDGE EXCELLENCE TECHNOLOGY

Enhance Printing Precision on the Border of the Media and helps in the smooth change over of carriage direction, leading to less jerk and lesser wear and tear.



#### DIGITAL VISCOSITY OPTIMIZATION

Optimized with digital observation of Ink viscosity curve, which helps in maintaining a stable waveform of jetting and ensures constant print quality.



#### PRESSURE DECLOGGER

SoniQ i offers a fifth button for **declogging**, which helps in maintaining pressure for efficient cleaning and reducing ink wastage.





# SPECIFICATIONS

SoniQ i				
Model			S4412	
Printing Technology			Drop-on-demand, Piezo electric inkjet	
Print Heads			Industrial Grade Jetting Assemblies	
Media	Width	3300 mm (129 in)		
	Thickness	Maximum 3.0 mm (120 mil) with Liner (flexible)		
	Roll Outer Diameter	Maximum 300 mm (12 in), 50.8 (2 in)		
	Roll Weight	Maximum 90 kg		
	Core Diameter	76.2 mm (3 in)		
Types			SAV, PAV Banner, Backlit Film, Window Film, Fabric (For Solvent Printing)	
Printing Width			Maximum 3200 mm (126 in)	
Ink	Type	Solvent / Mid Solvent Inks		
	No. of Colors	4 Colors (CMYK)		
Printing Resolution (dots per inch)			Maximum up to 1440 dpi	
Distance Accuracy			Error of less than $\pm 0.3\%$ of distance travelled, or $\pm 0.3$ mm whichever is great	
Media Heating System			Pre-heater and post-heater , setting range for the pre-set temperature: 30°C to 60°C Dryer setting range for the pre-set temperature: 30°C to 60°C	
Connectivity			High Speed USB	
Power Requirements (Peak)			AC 220 v $\pm 10\%$ , 20 Amps, 50/60 Hz	
Printer Dimensions			4525mm x 885mm x 1500mm (LxWxH)	
RIP Software			FlexiPrint	
Weight (approx. with stand)			642 Kgs	
Environmental	Power ON	Temperature: 18°C to 28°C Humidity: 20 to 40% RH (non-condensing)		
	Power OFF	Temperature: 5 to 40°C Humidity: 20 to 80%RH (non-condensing)		
Modes	Print DPI	Passes	Sqm/hr	Sqft/hr
Mode 1	360 x 360	2	114	1232
Mode 2	360 x 540	3	77	830
Mode 3	360 x 720	4	62	664
Mode 4	720 x 720	4	33	348
Mode 5	720 x 1080	6	22	232
Mode 6	720 x 1440	8	17	177



For Soniq i  
Scan Here

SOLVENT

# NEPTUNE PLUS

3.2 METRE ROLL-TO-ROLL SOLVENT PRINTER

## TECHNOLOGICALLY ADVANCED AND INNOVATIVE SIGNAGE PRINTER



**NEPTUNE PLUS** is a 3.2 Metre roll-to-roll solvent printer that combines high quality and high production speed. This newly launched NEPTUNE PLUS is ColorJet's signature flagship product. With its well-renowned robust body combined with improvised & advanced features, it offers very high value for money in its class and will be an unending success story for all its users. It is based on industrial Drop-on-Demand Japanese print head technology.

**NEPTUNE PLUS** is the finest solution for outdoor advertising applications customers, who need the quality prints at a very high speed. It is ideal for sign shops and commercial printers seeking to upgrade the quality and offer greater versatility and speed at an optimally cost-effective price. It is also an excellent solution for corporate in-house production of exhibition graphics, posters, signage, billboards, etc.

**OPTI**VALUE™  
BUILD

**xactcolor**™

**CIPO**™



## SPECIFICATIONS

			Neptune Plus	
Model			I4442	I8442
Printing Technology			Drop-on-demand, Piezo electric inkjet	
Print Heads			Industrial Grade Jetting Assemblies	
Number of heads			4	8
Media	Width	3300 mm (129 in)		
	Thickness	Maximum 3.0 mm (120 mil) with Liner (flexible)		
	Roll Outer Diameter	Maximum 300 mm (12 in), 50.8 (2 in)		
	Roll Weight	Maximum 90 kg		
	Core Diameter	76.2 mm (3 in)		
	Types	SAV , PVC Banner , Backlit Film , Window Film , Fabric (Solvent Base)		
Printing Width			Maximum 3200 mm (126 in)	
Ink	Type	Solvent/Mild Solvent inks		
	No. of Colors	4 Colors (CMYK)		
Printing Resolution (dots per inch)			Maximum 1440 dpi	
Distance Accuracy			Error of less than $\pm 0.3\%$ of distance travelled, or $\pm 0.3$ mm whichever is great	
Media Heating System			Pre-heater and post-heater , setting range for the pre-set temperature: 30°C to 60°C Dryer setting range for the pre-set temperature: 30°C to 60°C	
Connectivity			High Speed USB	
Power Requirements			AC 220 v $\pm 10\%$ , 20 Amps, 50/60 Hz	
Printer Dimensions			4510mm x 1022mm x 1355mm (L x W x H)	
Ink Compatibility			Solvent Inks	
Weight (Gross)			470 Kgs	
Environmental	Power ON	Temperature: 18°C to 28°C Humidity: 35 to 80% RH (non-condensing)		
	Power OFF	Temperature: 5°C to 40°C Humidity: 20 to 80% RH (non-condensing)		
Modes	Print DPI	Passes	I4442	I8442
Mode 1	180 x 360	2	42 sqm/hr (452 sqft/hr)	70 sqm/hr (753 sqft/hr)
Mode 2	180 x 540	3	28 sqm/hr (300 sqft/hr)	55 sqm/hr (592 sqft/hr)
Mode 3	180 x 720	4	24 sqm/hr (259 sqft/hr)	40 sqm/hr (430 sqft/hr)



For Neptune Plus  
Scan Here

ECO SOLVENT

# POLO HQ™

6 COLOR  
OPTION AVAILABLE

HIGH SPEED ECO-SOLVENT INDUSTRIAL PRINTER



BUILT TO  
DELIVER  
GREAT  
QUALITY  
PRINTS  
QUICKLY

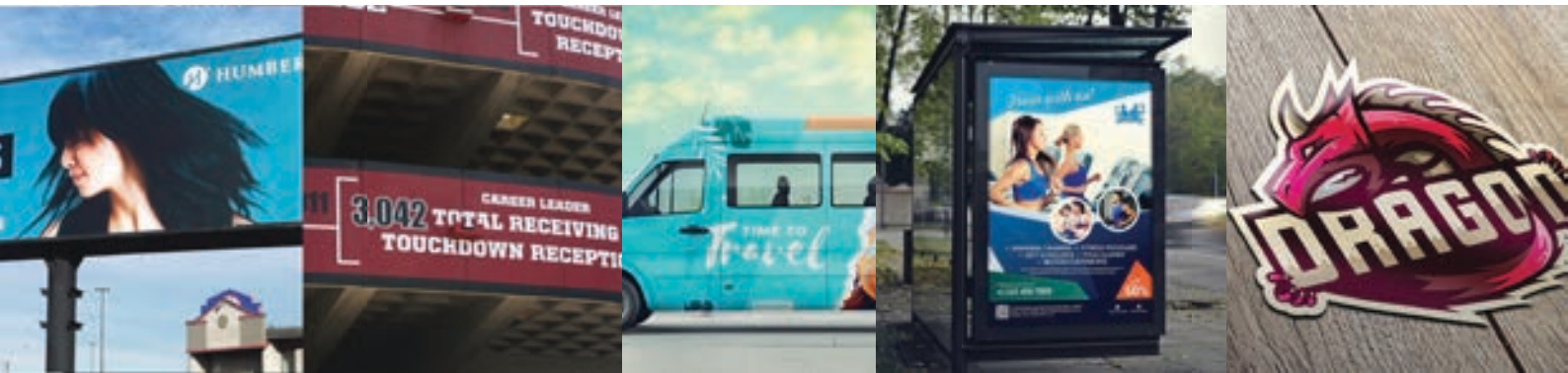


**POLO HQ**, the high-speed Industrial grade eco-solvent printer is built for speed & quality. At a speed of 1175 sqft/hr, **POLO HQ** displays quality print for mass production supported by IR based effective evaporative drying system to meet the high volume requirement. The 3.2 mtr roll-to-roll eco-solvent printer based on industrial grade jetting assembly ensures accuracy at high speed. The environment-friendly **POLO HQ** is built on heavy duty structure made with high mechanical precision standard to meet the growing requirement of those who want speed with quality.

## GREEN TECH INK MECHANISM

**Polo HQ** is highly eco-friendly and is based on ColorJet's **Greentech**. Greentech was born out of ColorJet's commitment to printing solutions in the eco-friendly green printing domain. GreenTech is powered by ColorJet's unique GreenTech printing technology that enables printing with **environment-friendly eco-solvent inks**. GreenTech ensures low chemical emissions to reduce environmental and health hazards. GreenTech eliminates harmful cyclohexanone and uses non-volatile organic compounds (NVOCs) for print results that are water resistant, fade resistant, media independent and UV safe - in addition to being more environment friendly. GreenTech works towards complete solutions that adequately successfully address human, environment, and commercial issues.





# SPECIFICATIONS

			POLO HQ	
Models			G4425	G6625
Printing Technology			Drop-on-demand, Piezo Electric inkjet	
Print Head			Grayscale Industrial Grade Jetting Assemblies	
No. of Print Heads			4	6
Media	Width	3300mm		
	Thickness	Maximum 3.00 mm with liner		
	Roll Outer Diameter	Maximum 3.52 m		
	Roll Weight	Maximum 150 Kg		
	Core Diameter	76.2mm , 50.8mm		
Types			Fabric (Ecosolvent based), SAV, PVC Banner, Backlit Film, Window Film	
Printing Width			Maximum 3200mm	
Inks	Types		Eco Solvent Ink	
	Color		4 Colors	6 Colors
Printing Resolution (dots per inch)			Maximum Up to 1440 dpi	
Distance Accuracy			Error of less than ±0.3% of distance traveled, or ±0.3 mm whichever is greater	
Media Heating System			Pre heater and Post-heater, setting range for the preset temperature: 30 to 60°C Dryer Setting range for the preset temperature: 30 to 60°C	
Connectivity			High Speed USB	
Power Requirements			AC 220 V+ _10%, 20 A, 50/60 Hz	
Dimensions			4960mm x 950mm x 1580 mm (LxWxH)	
RIP software			Onyx Gamaprint Rip (ColorJet Edition)	
Weight (approx. with stand)			1500 Kgs N.W., 1650 Kgs G.W	
Environmental		Power ON	Temperature: 18°C to 28°C, Humidity: 35 to 80%RH (Non-condensing)	
		Power OFF	Temperature: 5°C to 40°C, Humidity: 20 to 80%RH (Non-condensing)	
Modes	DPI	Passes	Sqm/hr	Sqft/hr
Mode 1	540 x 720	2	109	1175
Mode 2	540 x 1080	3	73	785
Mode 3	540 x 1440	4	46	495
Mode 4	540 x 1080	6	38	410
Mode 5	540 x 1440	8	26	280



For Polo HQ  
Scan Here

ECO SOLVENT

**SONIQ** **HQ**  
**PLUS**

TRUE 3.2 MTR ECO SOLVENT PRINTING MACHINE

# PROFESSIONAL QUALITY BEYOND COMPARE



Super-fast speed and vibrant prints of **SONIQ HQ PLUS** make it the go-to solution for indoor & outdoor printing needs. The configuration supports CMYK options with speeds achieving upto 915 Sqft/hr.

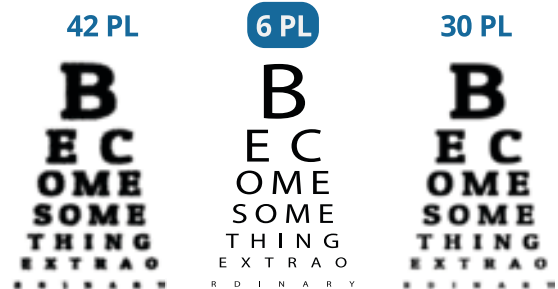
**SONIQ HQ PLUS** is the most suitable choice for a large array of ECO-solvent applications like Fabric, Canvas, SAV, PAV Banner, Window Film, Backlit both Eco-Solvent & Solvent Base.

## PREMIUM FEATURES:



### 6 PL RAZOR-SHARP PRINT

Capable of **6 picoliter droplets** that produce higher-resolution prints. The smallest picoliter is able to express clear thin lines, remarkable details, and needle-sharp text.



**bio**  
**print**

**BioPrint™** Technology is specially created for prints on **Bio-Degradable** and **100% Recyclable** Fabric media offers future-proof sustainable solutions to all the print business problems.

**GREENTECH™**

**SONIQ HQ PLUS** which is equipped with **GreenTech™** is compliant with all International Print Standards for providing perfect print solutions to the customers as per the industry and environmental norms.



# SPECIFICATIONS

SoniQ HQ Plus				
Model			S4427	
Printing Technology			Drop-on-demand, Piezo electric inkjet	
Print Heads			Industrial Grade Jetting Assemblies	
Fabric	Width		3300 mm (129 in)	
	Thickness		Maximum 3.00 mm with Liner (Flexible)	
	Roll Outer Diameter		Maximum 300 mm (12 in), 50.8 (2 in)	
	Roll Weight		Maximum 90 kg	
	Core Diameter		76.2 mm (3 in)	
	Types		Fabric, SAV, Canvas, PVC Banner, Window Film	
Printing Width			Maximum 3200 mm (126 in)	
Inks	Type		Eco Solvent	
	No. of Colors		4 Colors (CMYK)	
Printing Resolution (dots per inch)			Maximum 1440 dpi	
Distance Accuracy			Error of less than $\pm 0.3\%$ of distance travelled, or $\pm 0.3$ mm whichever is great	
Media Heating System			Pre-Heater and Post-Heater, setting range for the pre-set temperature: 30°C to 60°C Dryer setting range for the pre-set temperature: 30°C to 60°C	
Connectivity			High Speed USB	
Power Requirements			AC 220 v $\pm 10\%$ , 20 A, 50/60 Hz	
Printer Dimensions			4525 mm x 885 mm x 1500 mm (L x W x H)	
RIP Software			ONYX	
Weight (Gross)			642 Kgs	
Environmental	Power ON		Temperature: 18°C to 28°C Humidity: 20 to 80% RH (non-condensing)	
	Power OFF		Temperature: 5°C to 40°C Humidity: 20 to 80% RH (non-condensing)	
Modes	DPI	Passes	Sqm/hr	Sqft/hr
Mode 1	720 x 720	2	85	915
Mode 2	720 x 1080	3	55	592
Mode 3	720 x 1440	4	45	485
Mode 4	720 x 1080	6	28	300
Mode 5	720 x 1440	8	23	248



For SoniqHQ Plus  
Scan Here

ECO SOLVENT

# NEPTUNE HQ

ECO SOLVENT SUPER WIDE  
2-IN-1 INDOOR & OUTDOOR SIGNAGE PRINTER



## HIGH-PRODUCTIVITY, HIGHLY ECO-FRIENDLY PRINTER



**Neptune HQ**, the high-speed Industrial grade eco-solvent printer is built for speed & quality. At a speed of 503 sqft/hr, Neptune HQ is engineered for highest quality of vinyl and flex printing with eco solvent inks. The 3.2 mtr eco-solvent printer based on industrial grade jetting assembly ensures accuracy at high speed.

The environment-friendly **Neptune HQ** is built on heavy duty structure made with high mechanical precision standard to meet the growing requirement of those who want speed with quality.

- *One machine for indoor and outdoor signage*
- *Super-detailed eco-solvent printing across 10 ft print width*
- *Greentech technology for environment-friendly, odorless printing*







# SPECIFICATIONS

NEPTUNE HQ				
Model		Q4426		
Printing Technology		Drop-on-demand, Piezo Electric Inkjet		
Print Heads		Industrial Grade Jetting Assemblies		
Media	Width	3300 mm (129 in.)		
	Thickness	Maximum 3.0 mm (120 mil) with liner (flexible)		
	Roll Outer Diameter	Maximum 300 mm (12 in), 50.8 (2 in)		
	Roll Weight	Maximum 90 kgs		
	Core Diameter	76.2 mm (3 inch)		
	Types	SAV, PVC Banner, Backlite Film, Window Film, Fabric (ECO Solvent Base)		
Printing Width		Maximum 3200 mm (126 inch.)		
Inks	Types	Eco Solvent Inks		
	Color	4 Colors (CMYK)		
Printing Resolution (dots per inch)		Maximum 1440 dpi		
Distance Accuracy		Error of less than $\pm 0.3\%$ of distance traveled, or $\pm 0.3$ mm, whichever is greater		
Media Heating		Pre-heater and Post-heater, setting range for the preset temperature: 30 to 60°C. Dryer setting range for the preset temperature: 30 to 60°C		
Connectivity		High Speed USB		
Power Requirements		AC 220 V $\pm 10\%$ , 20 A, 50/60 Hz		
Dimensions (Printer Only)		4510 x 1022 x 1355 mm (LxWxH)		
RIP Software		FlexiRip (ColorJet Edition)		
Weight (approx. with stand)		470 Kgs		
Environmental	Power ON	Temperature: 18 to 28°C Humidity: 20 to 80%RH (Non-condensing)		
	Power OFF	Temperature: 5 to 40°C Humidity: 20 to 80%RH (Non-condensing)		
Print Modes	Print DPI	Passes	Sqm/hr	Sqft/hr
Production	720 x 720	2	46	503
Standard	720 x 1080	3	31	342
Fine	720 x 720	4	24	262
Quality	720 x 1080	6	16	175
High Quality	720 x 1440	8	12	133



For Neptune HQ  
Scan Here

# COLORJET inks

More print per drop

## WHY COLORJET INKS INCREASE YOUR PRINT BUSINESS PROFITABILITY

Engineered to maximise print quality

Engineered to maximise print speed and job turn around

Engineered to maximise print-head life and machine maintenance

Engineered to maximise your business

Engineered to maximise your printer's productivity

## 12 SOLID TECH REASONS



1. HIGHEST COVERAGE PER DROP FOR BEST PROFITABILITY



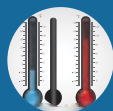
2. ENGINEERED TO WORK OPTIMALLY WITH PRINT-HEAD WITH MINIMUM DOWNTIME



3. HIGHEST PIGMENT CONTENT FOR MAX OUTDOOR LIFE



4. QUICKEST-DRYING FOR FASTEST JOB COMPLETION



5. OPTIMAL INK PERFORMANCE EVEN UNDER VARYING TEMPERATURE & HUMIDITY



6. ENGINEERED FOR MAX SCRATCH-RESISTANCE & BEST LONG TERM PRINT FINISH



7. COLOR DENSITY & COLOR GAMUT FOR MAX APPLICATIONS



8. MAX SHELF LIFE



9. CHEMICALLY ENGINEERED FOR OPTIMISED PRINT SYSTEM & MAX ECO FRIENDLINESS



10. HIGH SPEED PRODUCTION



11. WIDE-RANGE OF INKS FOR WIDEST RANGE OF MEDIA



12. ENGINEERED FOR LOWEST PRINTER MAINTENANCE



### END-TO-END INK RANGE

Solvent | Eco-Solvent | Dye-Sublimation  
UV Curable | Textile

*Disclaimer:* The speed and output of all machines have been tested with the usage of ColorJet inks. The organization recommends ColorJet inks to be used on ColorJet machines for optimum productivity and maximum profits. The availability of inks are country specific.

# HIGH QUALITY, COLOR CONSISTENT DIGITAL PRINTING WITH COLORJET PROPRIETARY TECHNOLOGIES

## OPTIVALUE BUILD

Digital printers are the business lifeline of print solution providers. This makes the optimal life of the machine's entry and exit across a heavy utilisation and new technology development time-cycle critical.

All Colorjet digital printers are designed & engineered through 3D simulation processes at Colorjet's Innovation Laboratories and built optimally, to deliver phenomenal business value, income and an optimal exit point to customers.



Built from 100% galvanized steel



Built to ensure accuracy of every micron



Have functional structures designed & manufactured from aeronautical - grade hard-anodized aluminium



Optimal performance from concept to design to prototype to production stages



8 stage preparation process of design, chemical treatment, powder coating and paint



QA processes to ensure error-free performance



Highest standard of aluminium and CNC

## xactcolor

In XACTCOLOR section replace first sentence with "Xactcolor™ was born after extensive continuous Research & Development as a response to the problems that emerged from the market and keep updated in pushing the limits. Climate and weather condition-wise, India is a very diverse country. Temperatures from subzero to 50 degrees celsius and humidity from high dew point to absolutely arid. These diverse climatic conditions influence ink and media to behave differently across different temperature and humidity zones.



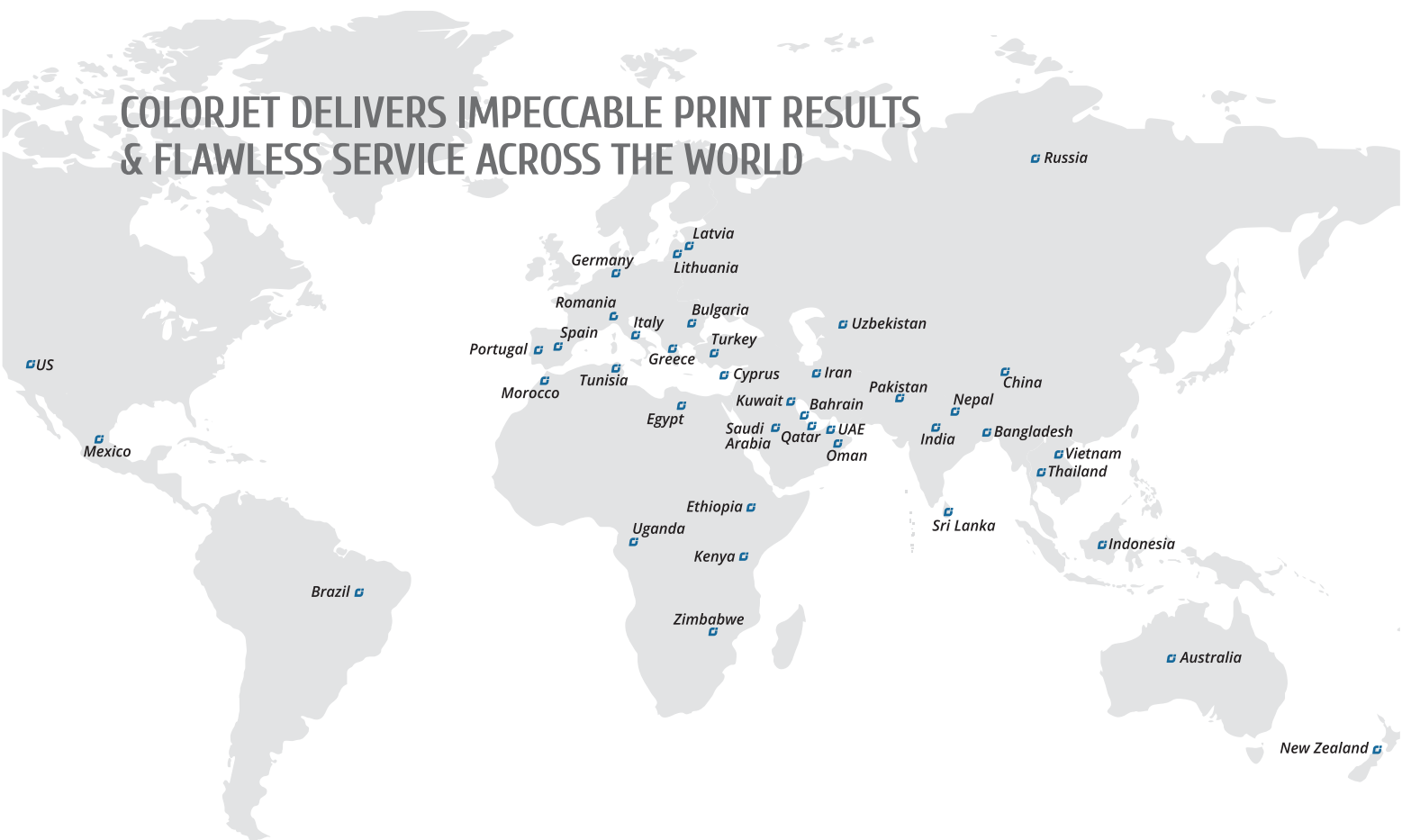
Synchronised print-head and software solution



Variable drop technology

The Colorjet R&D team created XACTCOLOR to reconcile all usage conditions through printhead, mechanical capability and software technologies to deliver consistent colour reproduction and detail under all applications and geographies.

# COLORJET DELIVERS IMPECCABLE PRINT RESULTS & FLAWLESS SERVICE ACROSS THE WORLD



## COLORJET GROUP

INDIA : A-6&7, In Front Of Samsung Display Unit, Sector-81, Noida-201305 (U.P.), INDIA. T +91 7217 885 728  
 DUBAI : Block-A, Office No: 115, Hamsah Building, Karama, P.O. Box: 123360, Dubai-UAE. T 00971 43961744  
 info@colorjetgroup.com | www.colorjetgroup.com

Accessories shown along with different printers in this brochure are not part of standard equipment. The final results of ColorJet are purely indicative and non-binding. Alterations and amendments can occur in specifications, materials or accessories without prior notice. Periodic maintenance is important for best quality output. ColorJet shall not be liable for any special or consequential damages that result from the use of, or the inability to use, the materials or the performance of the products. All trademarks, logos, symbols and designs depicted / mentioned in this brochure are trade names, trademarks and copyrights of their respective brand owners.